



Topaz Sailing System Rigging Instructions

Topaz UNO PLUS Topaz RACE PLUS Topaz RACE X



www.toppersailboats.com



TOPAZ SAILING SYSTEM RIGGING INSTRUCTIONS

INDEX

02. Introduction
02. Manufacturers Details

Rigging Instructions

03. Topaz UNO Rigging Instructions
07. Topaz UNO reefing
08. Topaz UNO PLUS Rigging Instructions
09. Topaz UNO RACE PLUS Rigging Instructions
10. Topaz UNO RACE X Rigging Instructions

INTRODUCTION

These **RIGGING INSTRUCTIONS** have been compiled to help you to rig your TOPAZ.

Please also ensure that you refer to your TOPAZ **OWNERS MANUAL**. The **OWNERS MANUAL** has been compiled to help you to operate your craft with safety and enjoyment. It contains details of the craft, the equipment supplied or fitted, it's systems and information on its operation and maintenance.

Please read it carefully and familiarise yourself with the craft before using it.

If this is your first craft, or you are changing to a type of craft you are not familiar with, for your own comfort and safety, please ensure that you obtain handling and operating experience before assuming command of the craft. Your dealer or national sailing federation or yacht club will be pleased to advise you of local sea schools, or competent instructors.

PLEASE KEEP THE **RIGGING INSTRUCTIONS** and THE **OWNERS MANUAL** IN A SECURE PLACE AND HAND THEM OVER TO THE NEW OWNER WHEN YOU SELL THE CRAFT.

MANUFACTURER DETAILS

For further information, spares and accessories, please contact the manufacturer:
TOPPER INTERNATIONAL LTD,
Kingsnorth Technology Park,
Wotton Road, Ashford, Kent TN23 6LN
Telephone +44 (0) 1233 629186
Fax +44 (0) 1233 645897
email info@toppersailboats.com



TOPAZ UNO

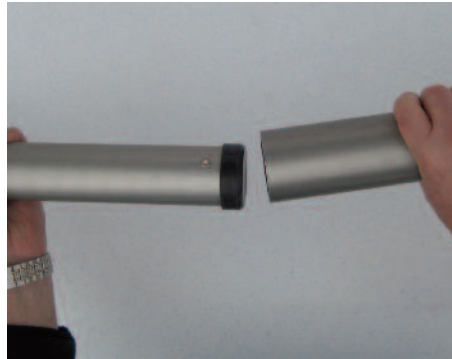
TOPAZ UNO RIGGING INSTRUCTIONS

TOPAZ UNO INVENTORY

Topaz Hull
Two piece mast
Boom
Rudder Assembly
Daggerboard
UNO Main Sail
Rope Set

MAST & MAINSAIL

1. Assemble upper and lower mast sections. Line up eyelets on the top section with cleats on lower mast. Slot upper mast into lower section and make sure that the two parts of the mast are secure.



2. ENSURE BOAT IS FACING HEAD TO WIND
Slide mainsail over top of mast section.

3. Open mastgate by lifting plunger sliding open as shown below. Stand mast upright, lift and place into mastcup. Ensure leech of sail is facing towards the back of the boat.



4. Support mast until gate is closed and plunger is fully engaged.



BOOM

1. Attach boom to mast.



BOOM & CLEW RING

2. Attach clew ring (*stainless steel ring with hook on boom*) to the eye of the sail.



DOWNHAUL

1. Attach downhaul to lower mast cleat by tying with a bowline onto the top bar of the cleat at the foot of the mast.
2. Feed downhaul through small metal ring on front/ foot of luff tube.
3. Then feed back through cleat on mast and lock in.



BOOM & KICKER

Attach kicker shackle to lower mast, attach through eye fitted to lower mast section with a screw driver.



Attach kicker key to fitting on boom.



Below; Rigged Kicker

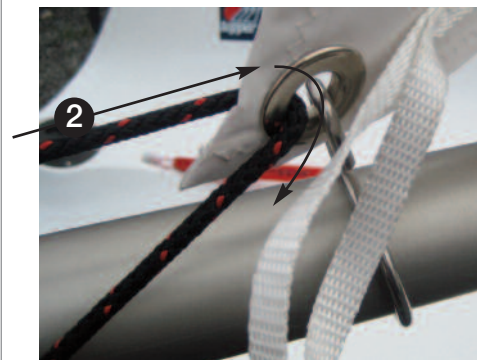


BOOM & OUTHAUL

1. Attach the Outhaul line to the fairlead at the end of the boom using a bowline.



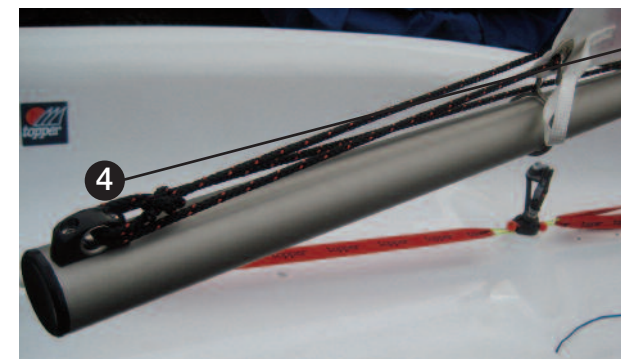
2. Then feed the outhaul forward and through the eye of the sail.



3. Then feed back through the fairlead.



4. Then feed forward along boom.



BOOM & OUTHAUL

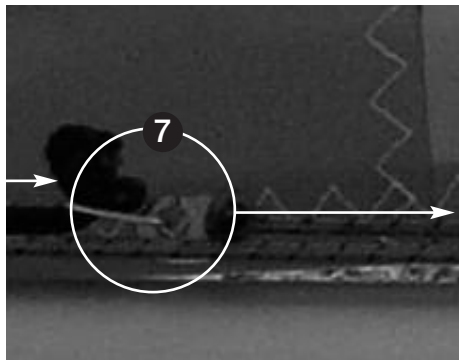
5. Continue to feed forward and through cleat on top of boom.



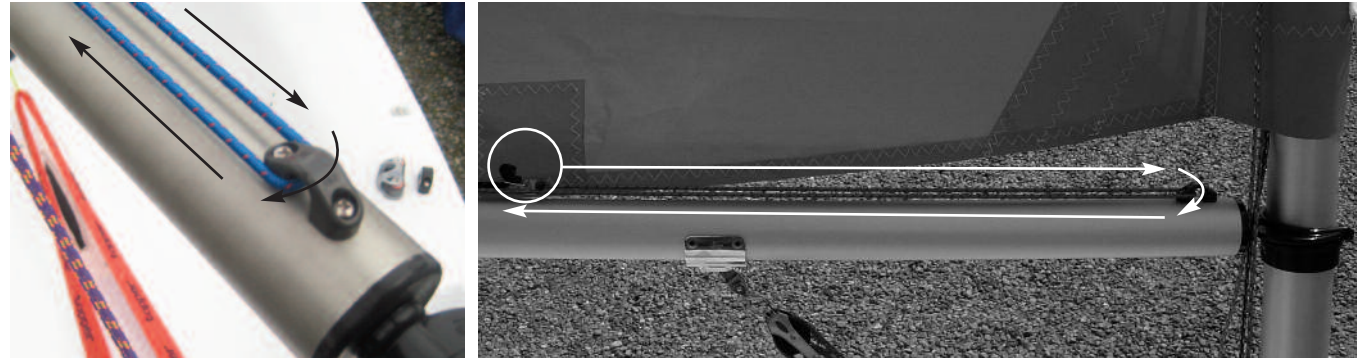
6. The outhaul has a small metal clip attached at the end. The 4mm shockcord also has a metal clip.



7. Attach the two clips together to join the rope outhaul to the shockcord section.



8. Then run the shockcord forward along the top of the boom. Feed through the fairlead at the front of the boom. (Take care when doing this because the shock cord will recoil at speed if it slips from your grip).



9. Then take the shockcord back along the boom towards the end of the boom and attach to the clew hook using a bowline (Also take care when doing this because the shock cord will recoil at speed if it slips from your grip).

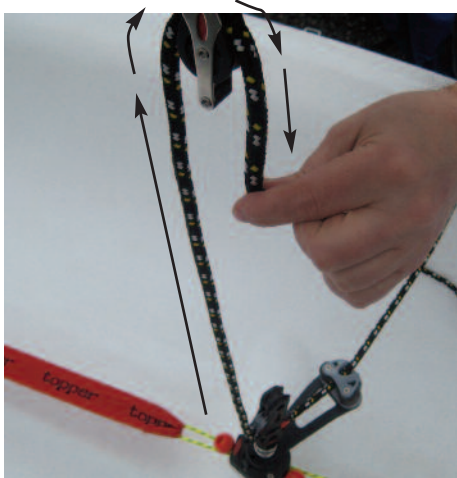


MAINSHEET

1. Thread the mainsheet through the mainsheet block assembly in reverse as pictured.



2. Then feed the mainsheet rope up to the boom, through the boom block and down again.



3. Then feed the rope through the top of the mainsheet block as shown.



4. Then take the rope up to the boom and through the block becket as shown and tie off using a figure of eight knot as shown.



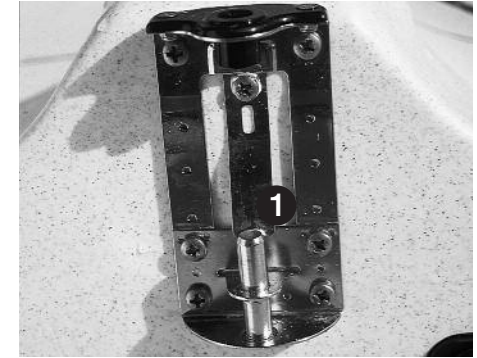
5. Then pull the tail of the mainsheet rope through the ratchet block.



Then tie a stop knot using a figure of eight knot.

RUDDER ASSEMBLY

1. Attach rudder blade assembly to transom plate. Ensure that rudder retaining clip snaps back into original position to hold rudder assembly in place.



DAGGERBOARD

1. Attach thick elastic to top of centreboard and place board into centreboard slot.

Attach the elastic around foot of mast with the plastic clip.



REEFING

In strong winds, or if you are unsure whether you can cope with the conditions, it is always best to reef the sail down to reduce its area.

1. First slacken the kicking strap off.



2. Unclip the kicker key from the boom.



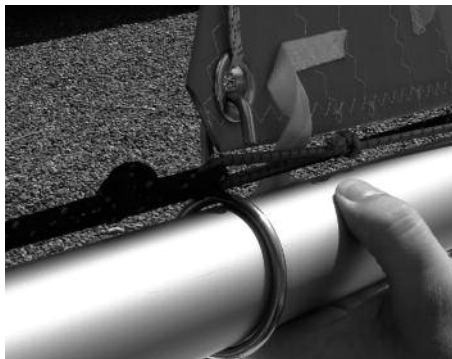
3. Uncleat and slacken the clew outhaul line and ensure that the foot of the sail is loose. (You may need to slacken the mainsheet in order to do this).



4. Wrap the mainsail around the mast in a clockwise direction. The sail will wrap round up to three times reducing the sail area incrementally.



5. Re-attach the clew outhaul and pull it tight.



6. Re-attach and tighten the kicking strap.



The sail can now be rolled around the mast, thus reducing the sail area. This is reefing.

topaz
SAILING SYSTEM

UNO PLUS

TOPAZ UNO PLUS RIGGING INSTRUCTIONS

TOPAZ UNO PLUS INVENTORY

As TOPAZ UNO with the addition of:

Jib Sail

Jib Halyard

Jib Sheets

Small Shackle

Rig the Uno Plus in the same way as the Uno with the addition of the jib.

JIB SAIL

1. Ensure that the jib fairlead fitting on the mast is in the centre of the opening on the mainsail.



2. Thread the jib halyard through the fairlead.



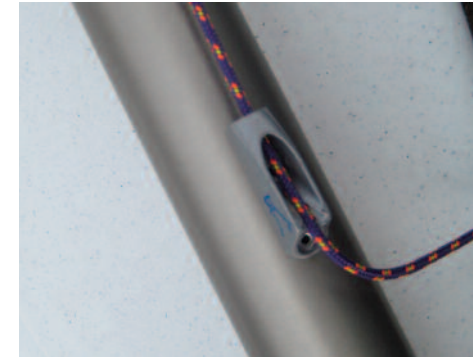
3. Tie the jib halyard to the head of the jib sail using a bowline knot.



4. Hoist the jib up to the top of the mast slot.



5. Cleat off the end of the jib halyard through the cleat towards the foot of the mast.

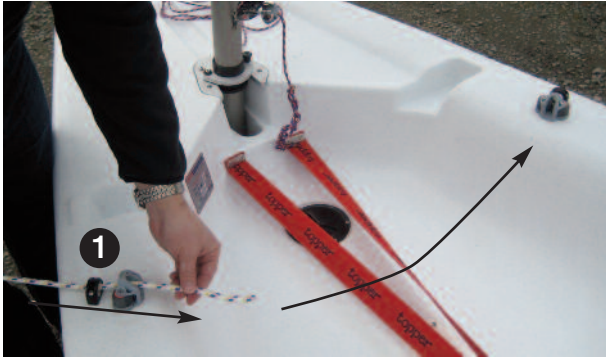


6. Attach the clew of the jib sail to the rope loop at the front of the hull as shown.

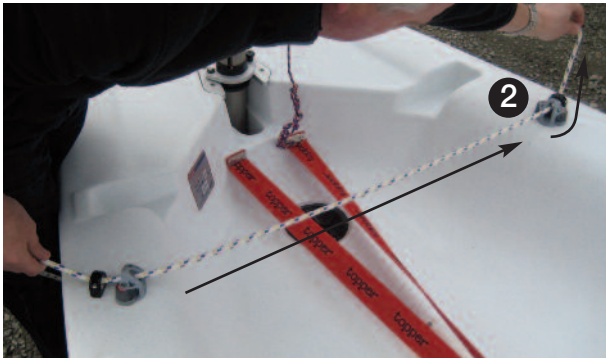


JIB SHEET

1. Thread the jib sheet through the fairlead and cleat on the side of the hull as shown.



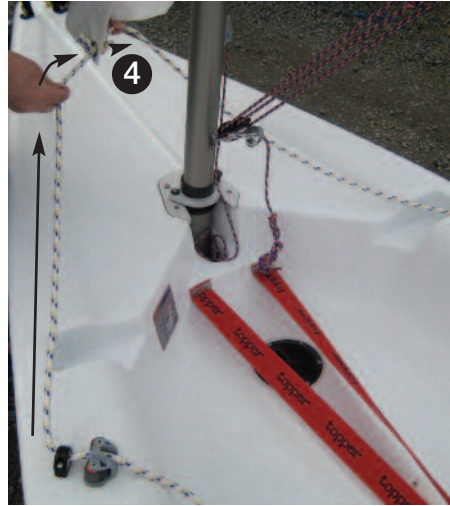
2. Then take the jib sheet across the deck to the opposite side of the hull and through the block and fairlead as shown.



3. Then take the end of the jib sheet around the front of the mast. Then through the clew eye at the back of the jib sail and tie off using a figure of eight knot at the end of the jib sheet.



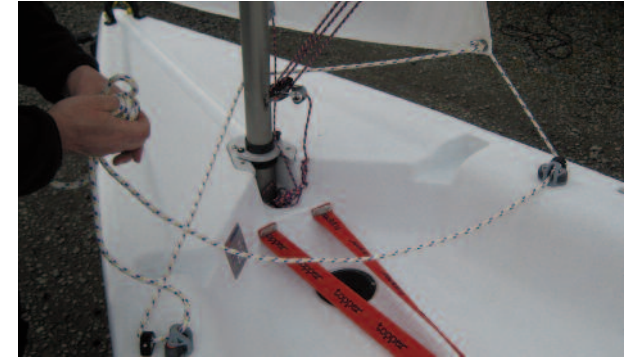
4. Take the other end of the jib sheet around the front of the mast and then through the clew eye and tie off using a figure of eight knot at the end of the jib sheet.



5. Your sheets should now be tied off with the knots either side of the jib sail as pictured.



This will give you a continuous line across the deck, round the front of the mast and linking through the jib clew from both sides.



TOPAZ UNO RACE PLUS

TOPAZ UNO RACE PLUS RIGGING INSTRUCTIONS

TOPAZ UNO RACE PLUS INVENTORY

Topaz Hull
Two piece mast
Boom
Daggerboard
Rope Set
Jib Sail
Jib Kit
Rudder Assembly incl. Extra-Length Rudder Blade
RACE Sail

The Topaz UNO RACE PLUS consists of the same components as the Topaz UNO PLUS, with the exception of the main sail and the rudder blade. The UNO RACE PLUS main sail is a battened mylar sail with a larger sail area and a slightly fuller cut. The rudder is an extra length GRP blade which provides greater control.

In order to rig the UNO RACE PLUS, follow the UNO and UNO PLUS rigging instructions.

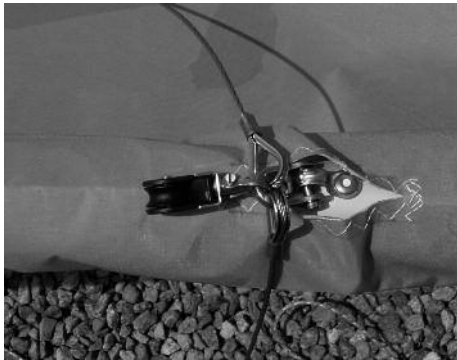
TOPAZ UNO RACE X

TOPAZ UNO RACE X RIGGING INSTRUCTIONS

TOPAZ UNO RACE X INVENTORY

As TOPAZ UNO RACE PLUS with the addition of:
RACE X Gennaker Sail (8.00m²)
Gennaker Kit

1. Attach the two shroud wires and block using the shackle to the metal clip attached to the upper mast above the jib fitting.



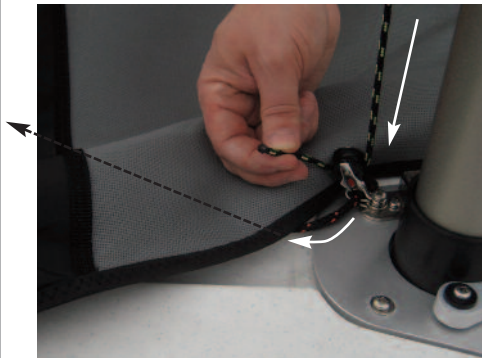
2. Then thread the gennaker halyard through the block and pull down to the base of the mast to ensure that when you raise the mast into the upright position in the boat that you can reach both ends.



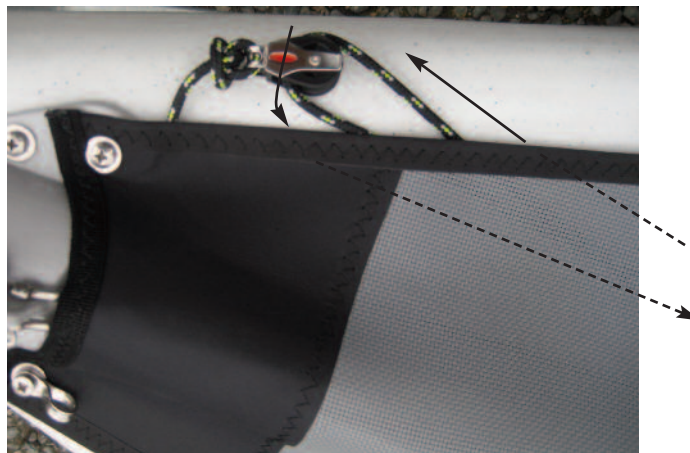
3. Tie one end of the halyard to the head of the gennaker using a bowline knot.



4. Take the other end of the gennaker halyard through the small block at the base of the mast.



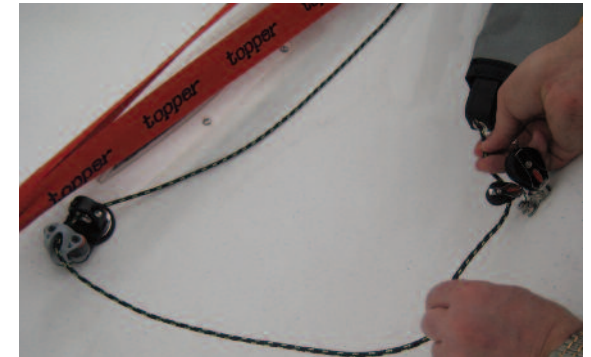
5. Then take it underneath the sock, forward to the bow of the boat until you come to a small block. Take the halyard through this block.



6. Then take the halyard back towards the stern of the boat, down through the cleat fitting in the cockpit of the boat as shown.



7. Then take the halyard through the starboard (right hand side from back of boat) block as shown.



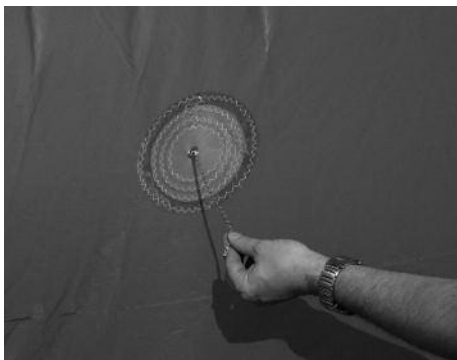
8. And then up the inside of the gennaker sock.



9. The halyard then comes out through the chute mouth.



10. Then feed the halyard through the patch as shown.



11. Then tie off using a bowline knot to the criss-cross patch above. You will now have completed a continuous loop for the sail and the halyard.



12. Tie the pole end line to the tack end of the gennaker using a bowline knot.



13. Attach the shroud wires to the hull shroud pin using the carabin hooks.



14. Thread the gennaker sheet through the auto ratchet across the boat and around the front of the mast and jib



15. Then thread through the eye at the clew end. Feed through the opposite sides. Then tie a figure of eight knot on each side of the gennaker sail.





www.toppersailboats.com

Topper International Ltd
Kingsnorth Technology Park
Wotton Road
Ashford
Kent
TN23 6LN

Tel. 01233 629186
Fax 01233 645897
email info@toppersailboats.com

TOPAZ RIGGING INSTRUCTIONS PART No. TP025 ISSUE 1/ 2009